

AutoCAD Map 3D®

Helping you get more from your CAD and mapping information.

A complete CAD and Mapping Solution

AutoCAD Map 3D is a unique application integrating the full power of computer-aided design (CAD) and geographic information system (GIS) functionality into a single solution. With open data standards and CAD integration, AutoCAD Map 3D helps to streamline workflows and maximise the value of geospatial data seamlessly. The power and flexibility of the tools within the software makes it suitable for a wide range of users and industries interested in creating, accessing and managing mapping and design data.

The power of AutoCAD Map

AutoCAD Map enables organisations to fully harness the power of their data by bridging the gap between CAD and other mapping systems. From planning through design, construction, and maintenance, the product delivers a powerful data management tool and a fully integrated platform for managing projects and assets.



AutoCAD Map 3D provides:

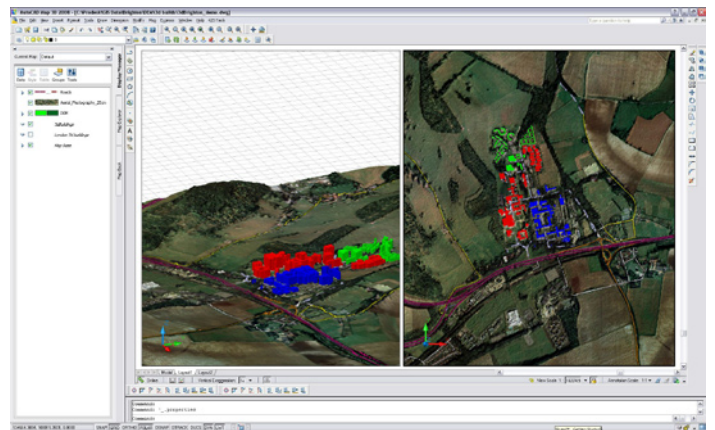
- » The full functionality of AutoCAD
- » Direct and quick access to CAD, geospatial and raster data formats
- » AutoCAD tools for precision editing of mapping data
- » Powerful, flexible and open data management tools
- » Extensive tools for map creation, presentation and publishing
- » Web publishing via Autodesk MapGuide Enterprise and MapGuide Open Source

Be more efficient with your data

Geospatial data lives at the centre of any mapping or CAD project, and for many organisations is a fundamental part of doing business. However, many of these organisations are not able to fully utilise their geospatial data because it is stored in many locations. Often, engineers, GIS specialists, and information technology (IT) personnel will store and manage copies of the same geospatial data in different systems and in different ways. AutoCAD Map is ideally suited to solve these data management issues.

Access to more Intelligent Data

It is expensive to manage multiple types of software, convert data, synchronise systems, and keep design and operations disconnected. Organisations are now keen to collaborate and work more closely to gain efficiencies when managing CAD and mapping data.



Because AutoCAD Map is based on open data standards, organisations gain the flexibility to access virtually any geospatial data available, offering far more choice than the minimal options in standard AutoCAD. This makes sharing data with colleagues or third parties much easier.

Implementing AutoCAD Map enables organisations to combat the high levels of redundancy, inaccuracy, and data versioning problems that often result from information that is not shared or easily accessible.

Autodesk's open source data access technology, is at the heart of AutoCAD Map, enabling users to natively access spatial data stored in foreign file formats or databases. Whether data is stored in DWG, DGN, SHP, TAB or other standard geospatial formats, AutoCAD Map can directly access and edit the data, removing the need for continual translation of data between systems. AutoCAD Map also works seamlessly with Oracle, MySQL, SQL Server and ESRI ArcSDE. Users can therefore manage and store geospatial data as easily as they can create and edit it.

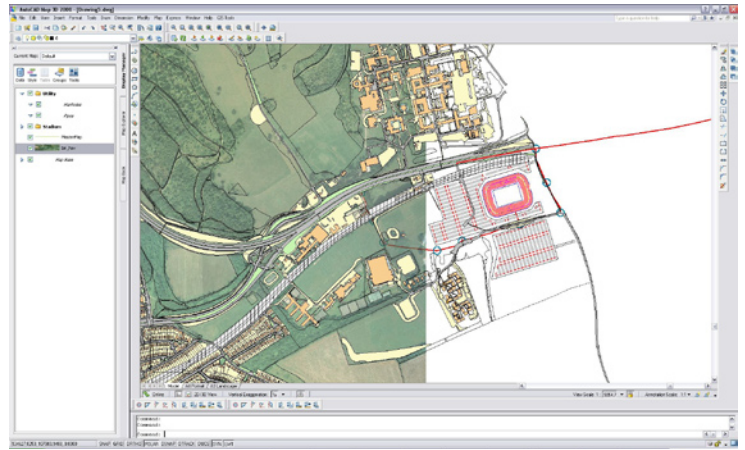


Manage Ordnance Survey Data

AutoCAD Map can manage all the digital data supplied by the Ordnance Survey®. This includes OS MasterMap, the detailed, intelligent, large scale dataset of the UK.

OS MasterMap data is either delivered to users in GML files (Geography Mark-up Language)

directly from the Ordnance Survey, or its supplied by a third party or a partner in various other geospatial formats. Most of these formats are not readable by standard AutoCAD. Using AutoCAD Map software, users can read OS MasterMap data whether the data is held within a flat file or a spatial database.



Powerful displays

AutoCAD Map cartography tools enable users to create maps that in the past required additional GIS-specific software to produce. It is simple to create stylised versions of data to highlight specific features and represent attributes held on the data. For instance, create a thematic map showing land-use differences for parcels of data. Once completed the user can save styles and re-use them in any project.

Summary

Organisations that adopt AutoCAD Map save time and money almost immediately, greatly minimising time-consuming data conversion, error-prone data redundancy, and the loss of valuable CAD precision that comes from managing data separately.

The software will easily scale as the organisation evolves, ensuring the users get the most out of the CAD and mapping information they use.

Benchmark Ltd

9 Laura House
Jengers Mead
Billingshurst
West Sussex
RH14 9NZ

Tel: 01403 784 139
Fax: 01403 786 813
www.bmarq.co.uk
info@bmarq.co.uk



benchmark